

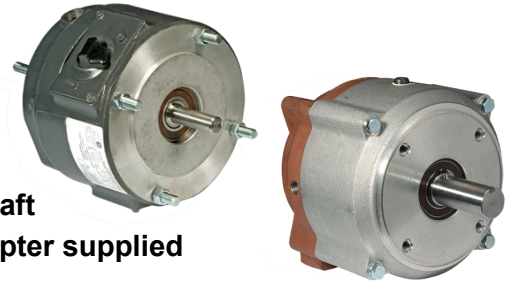


COUPLER BRAKES

GENERAL PURPOSE IP23 COUPLER BRAKES



- Mounts between motor and driven load
- Rugged cast iron & aluminum construction
- Designed to be “C face” connected at both ends
- IP23 construction suitable for indoor use
- **Note:** Not suited for overhung loads applied to the output shaft
- 6 ft/lb brake can be used with either 56 or 140TC mount (adapter supplied with brake)



IND No. 115/208-230V Single Phase	IND No. 208-230/460V Three Phase	IND No. 575V Three Phase	Brake Rating (ft/lbs)	Max HP @ 1725 RPM	Mounts to NEMA Frame	Brake Output Shaft and C Face	Add to Motor “C” Dim	LIST
ST 1-056-711-05-PF	ST 1-056-711-05-QF	ST 1-056-711-05-NF	3	1/2	56C	.625”/56C	5.0”	573
ST 1-056-721-05-PF	ST 1-056-721-05-QF	ST 1-056-721-05-NF	6	1	56C	.625”/56C	5.0”	648
ST 1-056-731-07-PF	ST 1-056-731-07-QF	ST 1-056-731-07-NF	10	2	56C/140TC	.875”/140TC	5.0”	763
ST 1-056-731-07-PF	ST 1-056-731-05-QF	ST 1-056-731-05-NF	10	2	56C/56C	.625”/56C	5.0”	763
ST 1-087-721-01-PG	ST 1-087-721-01-QG	ST 1-087-721-01-NG	15	3	180TC	1.125”/180TC	8.38”	2891
ST 1-087-731-01-PG	ST 1-087-731-01-QG	ST 1-087-731-01-NG	25	5	180TC	1.125”/180TC	8.38”	2983

Stearns Coupler Brakes also available in IP55 washdown (Type 4X BISSC Certified)
Call for pricing and availability.

56,000 SERIES: SOLENOID ACTUATED BRAKES



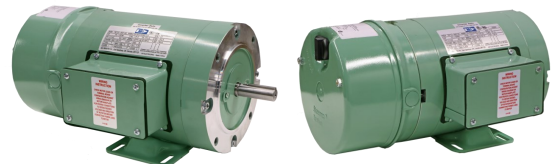
For industrial applications requiring high performance in a compact light-weight package.

- Mounts on 56C face with 5/8” shaft
- Spring-set electrically released
- Adjustable torque, down to 50% of rated nameplate torque
- Manual wear adjustment
- Airgap adjust gage
- Splined hub
- Universal mounting through 15 lb-ft.

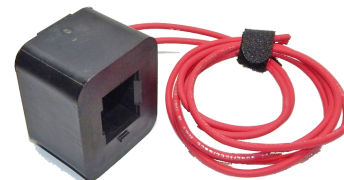


[TENV Integrated
Brakemotors
on page 4](#)

AG-I IND No.	VOLTS	LB-FT	LIST
ST 1-056-011-00-BNF	575V.	3	409
ST 1-056-011-00-BQF	230/460V.	3	409
ST 1-056-011-00-BPF	115/230V.	3	409
ST 1-056-021-00-BNF	575V.	6	468
ST 1-056-021-00-BQF	230/460V.	6	468
ST 1-056-021-00-BPF	115/230V.	6	468



**Replacement coils and discs
in stock! See page 18**





BRAKE PARTS COILS, STATIONARY, & FRICTION DISCS



Stearns®

REPLACEMENT COILS

BRAKE TYPE	TORQUE	FOR BRAKE #	VOLTAGE	COIL IND#	DESCRIPTION	LIST
Coupler	3 lb-ft.	ST 1-056-711-05-NF	575	ST 596647974	NO.4 COIL KIT	369
Solenoid	3 lb-ft.	ST 1-056-011-00-BNF	575	ST 596647974	NO.4 COIL KIT	369
Coupler	3 lb-ft.	ST 1-056-711-05-PF	115/230	ST 596647959	NO.4 COIL KIT	621
Solenoid	3 lb-ft.	ST 1-056-011-00-BPF	115/230	ST 596647959	NO.4 COIL KIT	621
Coupler	3 lb-ft.	ST 1-056-711-05-QF	230/460	ST 596647970	NO.4 COIL KIT	667
Solenoid	3 lb-ft.	ST 1-056-011-00-BQF	230/460	ST 596647970	NO.4 COIL KIT	667
Coupler	6 lb-ft.	ST 1-056-721-05-NF	575	ST 596647974	K4 COIL KIT	369
Coupler	10 lb-ft.	ST 1-056-731-05-NF	575	ST 596647974	K4 COIL KIT	369
Solenoid	6 lb-ft.	ST 1-056-021-00-BNF	575	ST 596647974	K4 COIL KIT	369
Coupler	6 lb-ft.	ST 1-056-721-05-PF	115/230	ST 596647959	K4 COIL KIT	621
Coupler	10 lb-ft.	ST 1-056-731-05-PF	115/230	ST 596647959	K4 COIL KIT	621
Solenoid	6 lb-ft.	ST 1-056-021-00-BPF	115/230	ST 596647959	K4 COIL KIT	621
Coupler	6 lb-ft.	ST 1-056-721-05-QF	230/460	ST 596647970	K4 COIL KIT	667
Coupler	10 lb-ft.	ST 1-056-731-05-QF	230/460	ST 596647970	K4 COIL KIT	667
Solenoid	6 lb-ft.	ST 1-056-021-00-BQF	230/460	ST 596647970	K4 COIL KIT	667
Coupler	15 lb-ft.	ST 1-087-721-01-NG	575	ST 596660951	NO. 6 COIL KIT	992
Coupler	15 lb-ft.	ST 1-087-721-01-PG	115/230	ST 596660938	NO. 6 COIL KIT	784
Coupler	15 lb-ft.	ST 1-087-721-01-QG	230/460	ST 596660949	NO. 6 COIL KIT	848
Coupler	25 lb-ft.	ST 1-087-731-01-NG	575	ST 596660951	NO. 6 COIL KIT	992
Coupler	25 lb-ft.	ST 1-087-731-01-PG	115/230	ST 596660938	NO. 6 COIL KIT	784
Coupler	25 lb-ft.	ST 1-087-731-01-QG	230/460	ST 596660949	NO. 6 COIL KIT	848

STATIONARY AND FRICTION DISCS

BRAKE TYPE	TORQUE	STATIONARY DISC	IND#	LIST	FRICTION DISC	IND#	LIST
Coupler	3 lb-ft.	DISC KIT - 1 DISC	ST 566835400	145	KIT-1 DISC, 2 SPINGS	ST 566846200	266
Coupler	6 lb-ft.	DISC KIT - 1 DISC	ST 566835400	145	KIT-1 DISC, 2 SPINGS	ST 566846200	266
Solenoid	3 lb-ft.	DISC KIT - 1 DISC	ST 566835400	145	KIT-1 DISC, 2 SPINGS	ST 566846200	266
Solenoid	6 lb-ft.	DISC KIT - 1 DISC	ST 566835400	145	KIT-1 DISC, 2 SPINGS	ST 566846200	266
Coupler	10 lb-ft.	DISC KIT - 2 DISC	ST 566835500	277	KIT-1 DISC, 2 SPINGS	ST 566846200	266
Coupler	15 / 25 lb-ft.	N/A	N/A	N/A	KIT - 1 DISC	ST 566847200	363

TECO AC FREQUENCY DRIVES

A510 HEAVY DUTY AC DRIVE - NEMA 1

- 1 to 100 HP (CT), 1 to 125 HP (VT), 230V, 50/60Hz, 3 Phase
- 1 to 200 HP (CT), 1 to 250 HP (VT), 460V, 50/60Hz, 3 Phase
- 1 to 10 HP (CT/VT) 575V, 50/60Hz, 3 Phase
- 15 to 250 HP (CT), 15 to 270 HP (VT) 690V, 50/60Hz, 3 Phase
- Control modes for V/F, V/F w/ PG feedback, Sensorless Vector & Closed Loop Vector
- Simple PLC Function Built-in
- Advanced Regenerative Load Handling Capability
- Conformal Coating on PC Boards
- Remotely Mountable LCD Keypad



TECO

Westinghouse

A510 Control for today's demanding motor driven applications.



Contact AG-I MotorTec for Price and Delivery on these and other TECO drive products